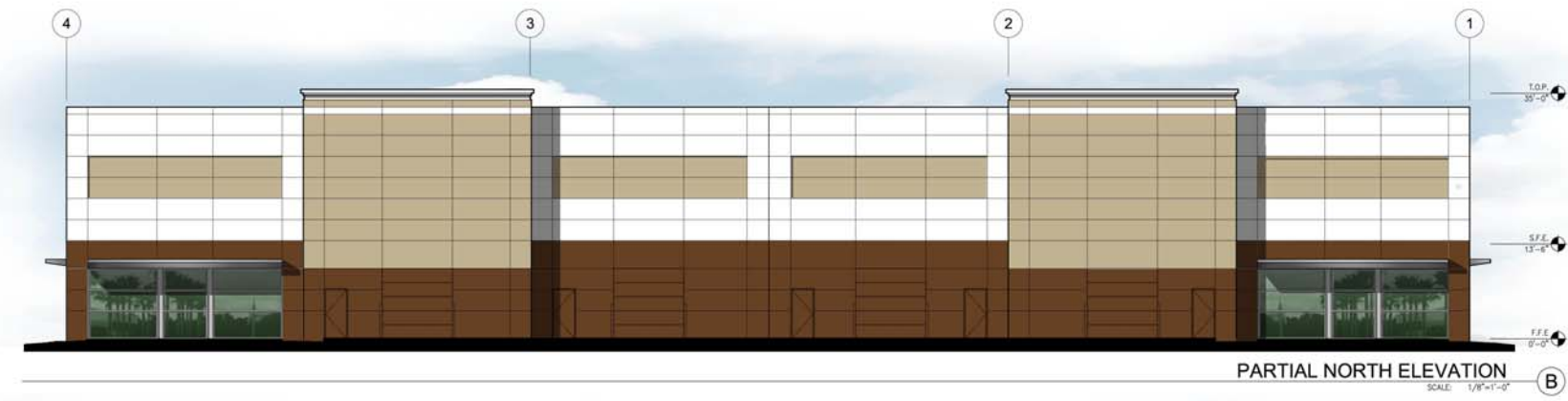




PARTIAL NORTH ELEVATION
SCALE: 1/8"=1'-0" (A)



PARTIAL NORTH ELEVATION
SCALE: 1/8"=1'-0" (B)



WEST ELEVATION
SCALE: 1/8"=1'-0" (D)



EAST ELEVATION
SCALE: 1/8"=1'-0" (C)

WARE MALCOMB
www.waremalcomb.com
p 925.244.9630
094.017.00 12.05.06
architecture
planning
interiors

TKG 1
BLDG 1
Colored Elevations

TKG
Livermore, California

